



Five Easy Steps



STEP 1:
Remove all residue from the containment floor and rinse clean.



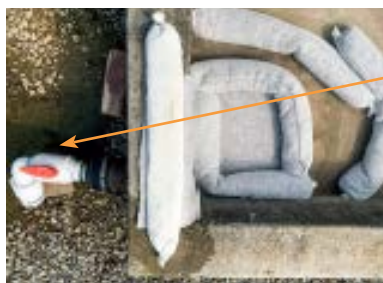
STEP 2:
Install **HuskyFlex Pre-filter Sheet** over the outlet drain hole.



STEP 3:
Lay **Silt Trap Pre-filter Socks** to secure **HuskyFlex** and capture fine sediment.



STEP 4:
Install an extra row of **Silt Trap Pre-filter Socks** around the perimeter of the drain to stop debris and large sediment.



STEP 5:
Install the **Drainiac® Petroleum Filter Valve** on the outfall side of the pipe.

Do you have any of these problems?

- Wasting time manually draining stormwater from secondary containment structures?
- Forgetting to close drain valves?
- Hiring expensive vac trucks to pump, haul and dispose of oil-sheeny wastewater?
- Frozen containment floors in winter?
- Replacing costly petroleum filter valves

Applications for Drainiac® Petroleum Filter Valve System

- Aboveground petroleum storage tank containments
- Electrical Substations
- Portable secondary containment
- Petroleum liquid storage terminals
- Stormwater runoff
- Oil/Water Separator outfalls
- Petroleum pipeline pumping stations
- Retention pond outfalls
- Cooling tower wastewater

Features

- Filter and encapsulate petroleum sheens from stormwater
- Automatically shuts off in case of petroleum spill inside containment
- Patent-pending Pre-filter System prevents suspended solids from clogging the Drainiac® valve
- Filters petroleum products from stormwater to non-detectable levels (less than 5 PPM)
- Independent lab tested and verified

Benefits

- Helps you stay in regulatory compliance
- Reduce labor from manual draining by up to 90%
- Extend service life of Drainiac® filter valves up to 300%
- Cut overall stormwater treatment costs by 50% or more

SEE OTHER SIDE FOR
DRAINIAC® INSTALLATIONS





3-inch Drainiac® Petroleum Filter Valve is compact and can be installed in a large variety of configurations



For complete drainage install Drainiac® filter as near to vertical as possible



1-inch PVC Drainiac® adapter for smaller drain fittings






Always allow for a minimum of 30-degree drainage slope



Build a manifold for faster filtration of larger containments



 halenhardy.com
 814-822-2004
 sales@halenhardy.com